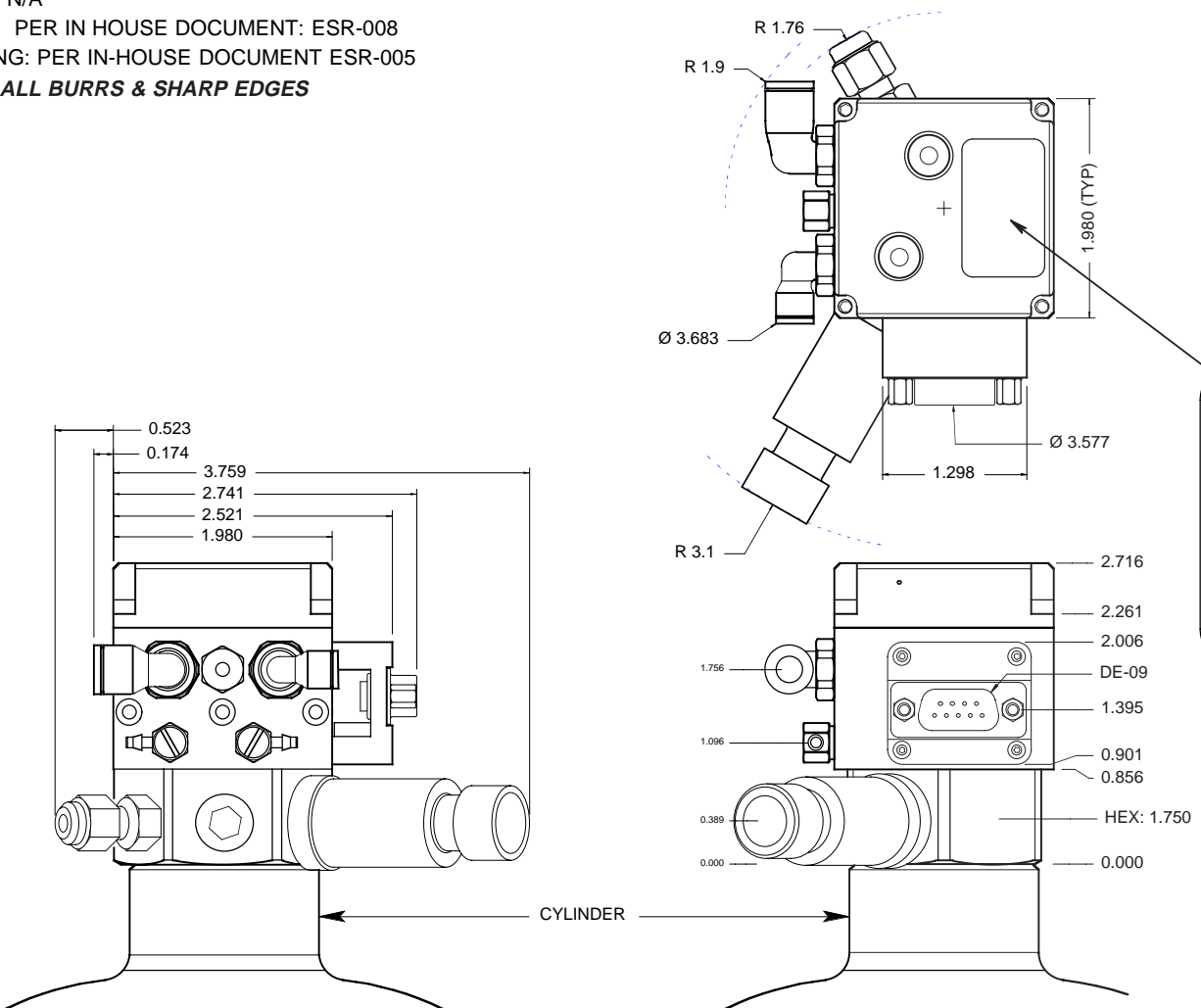


**NOTES:**  
**UNLESS OTHERWISE SPECIFIED IN THE QR OR PO, THE FOLLOWING SHALL APPLY**

- ⚠ MATERIAL: N/A
  - ⚠ FINISH: N/A
  - ⚠ CLEAN: PER IN HOUSE DOCUMENT: ESR-008
  - ⚠ MARKING: PER IN-HOUSE DOCUMENT ESR-005
- REMOVE ALL BURRS & SHARP EDGES**

REVISION HISTORY (version roll-offs are kept onfile)

REV	MO-DA-YR	NEO / ECO	NAME	NOTES
-	01-02-07			INITIAL DRAFT



**IPR**  
**DUAL-VALVE, ELECTRO-PNEUMATICALLY CONTROLLED OXYGEN SUPPLY REGULATOR**

MAX. INLET PRESSURE: 0-207 BAR (0-3000 PSIG.)  
V1: OUTLET PRESSURE: 1 BAR ± .125 (-15 PSIG.)  
V2: OUTLET PRESSURE: 1 BAR ± .125 (-15 PSIG.)

**MH**

MAX. FLOW, BOTH PORTS EXCLUSIVE : ~40 L / MIN @ ~1 BAR

**V1**

↓

ELECTRO-PNEUMATICALLY OPERATED

VALVE OPEN

**V2**

↓

PNEUMATICALLY OPERATED

VALVE CLOSED

REFERENCE  
DRAWING

THIS DOCUMENT AND ALL TECHNICAL DATA HEREON DISCLOSED ARE PROPERTY OF MOUNTAIN HIGH E&S CO. AND SHALL NOT BE USED, RELEASED OR DISCLOSED IN WHOLE OR PART WITHOUT WRITTEN PERMISSION FROM MOUNTAIN HIGH E&S CO. THIS DOCUMENT MUST BE RETURNED TO MOUNTAIN HIGH E&S CO. IMMEDIATELY UPON REQUEST.

UNLESS OTHERWISE SPECIFIED DIMS ARE IN INCHES. TOLERANCES ARE:				THIRD ANGLE PROJECTION		<b>MH</b> MOUNTAIN HIGH E&S CO. REDMOND, OR. USA	
0.X	±0.015	ANGLES	FRACTIONS	63 ✓	[ KC ] 00 NUMBER OF KEY CHARACTERISTICS IN THIS DRAWING / DOCUMENT PER MH DOC: ESR-001		
0.XX	±0.010	± 0.5°	± 1/64				
0.XXX	±0.005						
INTERPRET GD&T PER ASME 14.5				FMT REV H		DO NOT SCALE DRAWING	
ORIGINAL MO-DA-YR	PLM, 01-02-07	MATERIAL	⚠	DWG. TITLE	IPR FORM-FACTOR DETAIL PRELIMINARY		
ENGINEER MO-DA-YR	PLM, 01-02-07	FINISH	⚠	DWG. NUMBER	OIPR-031-00	DWG. REVISION	REV -
DRAWN MO-DA-YR	PLM, 01-02-07	CLEAN	⚠	CAD FILE NUMBER	IPR Parts ASSY. Work: IPR FF	DWG. SHEETS	1 OF 1
CHECKED MO-DA-YR	-	MARKING	⚠	INV. PART NUMBER	NYA	CAT ITEM NUMBER	NYA