

1

2

3

4

GENERAL SPECIFICATIONS

Material: UNS A96061 (6061-T6) Aluminum
 Weight: 2.0 oz [58 g]

Inlet/Outlet Fittings: G-1/8 BSPP x 6mm Tube
 • Wrench: 13mm
 • Tubing: 6mm OD PolyUrethane (MH p/n 19600-0003-00)

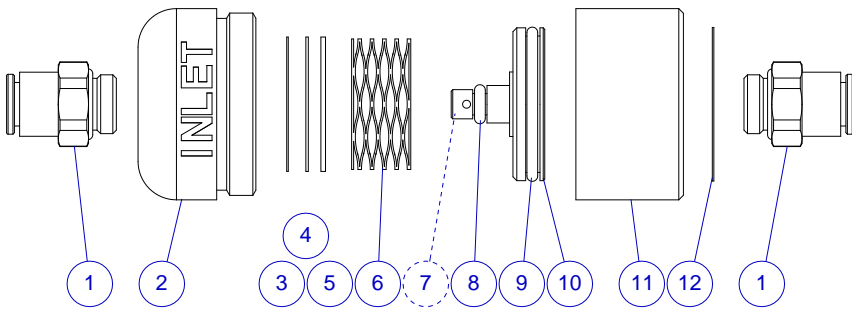
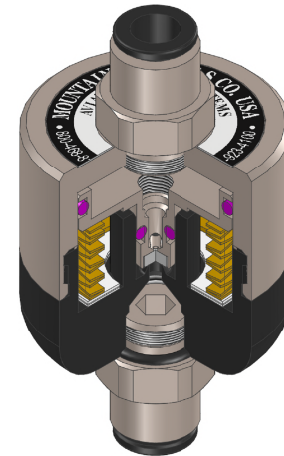
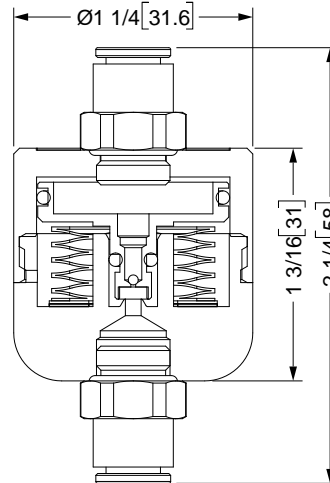
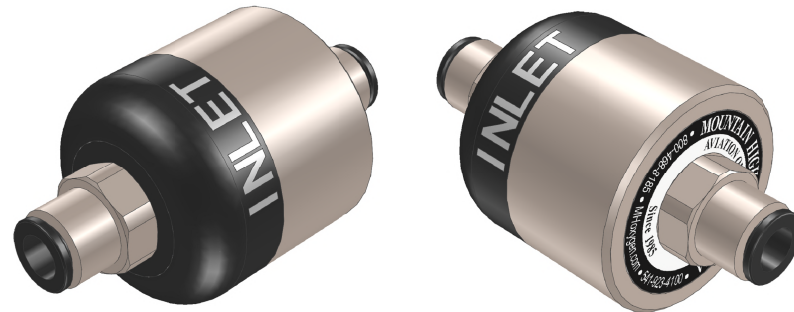
Inlet Pressure Rating: 100 PSI [6.9 bar] MAX
 Regulated Outlet: 18 ± 2 PSI [1.24 ± 0.14 bar] (Dynamic)
 20 ± 2 PSI [1.38 ± 0.14 bar] (Static)

Average Flow Rate: 60 L/min

Temp Range: -4°F to +122°F [-20°C to +50°C]

See also MH document 5IREG-0050-06 ("Inline Step-down Regulator Information Sheet") for performance characteristics and additional information.

REV	ECO	Release	Drawn	REVISION HISTORY
A2	2020-025	2020-08-13	SGO	Customer Drawing



Item	Qty	Description	Item	Qty	Description
1	2	Outlet Fitting, 6mm tube, Straight	7	1	Puck
2	1	Inlet Body	8	1	O-Ring
3	A/R	Shim, .010	9	1	O-Ring
4	A/R	Shim, .016	10	1	Piston
5	A/R	Shim, .030	11	1	Outlet Body, Axial
6	1	Spring	12	1	Label

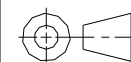
UNLESS OTHERWISE SPECIFIED,
DIMENSIONS ARE IN INCHES.

DIMENSIONS IN [] ARE MILLIMETERS (REF)

TOLERANCES ARE:
 0.X ±0.015 ANGLES ±3°
 0.XX ±0.010 FRACTIONS ±1/64
 0.XXX ±0.005

INTERPRET GD&T PER ASME 14.5

THIRD ANGLE
PROJECTION



DO NOT SCALE
DRAWING

DRAWN SGO
2020-08-06

CHECKED

ENGINEER

APPROVED

MH

**MOUNTAIN HIGH E&S CO.
REDMOND, OR. USA**

THIS DOCUMENT AND ALL TECHNICAL DATA HEREON DISCLOSED ARE PROPERTY OF MOUNTAIN HIGH E&S CO. AND SHALL NOT BE USED, RELEASED OR DISCLOSED IN WHOLE OR PART WITHOUT WRITTEN PERMISSION FROM MOUNTAIN HIGH E&S CO. THIS DOCUMENT MUST BE RETURNED TO MOUNTAIN HIGH E&S CO. IMMEDIATELY UPON REQUEST.

DWG
TITLE

Customer Drawing,
EDS-ILR Inline Regulator [SCD]

DWG
NUMBER

5SREG-1110-00

DWG
REV. **A2**

SRC
FILE

00REG-1110-00\$A2

INV. PART
NUMBER

00REG-1110-00

PROD.
NAME

EDS-ILR

DWG FORMAT:
ESR-002 Rev H [26]

DWG
SCALE

DWG
SHEET

1 OF 1

DWG
SIZE **A**
11x8½

Insert #: 5IREG-1110-00