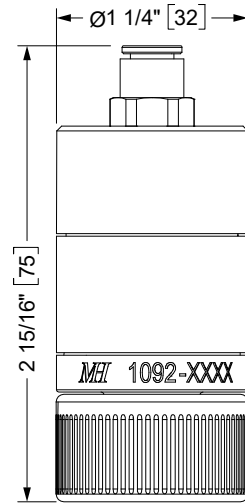
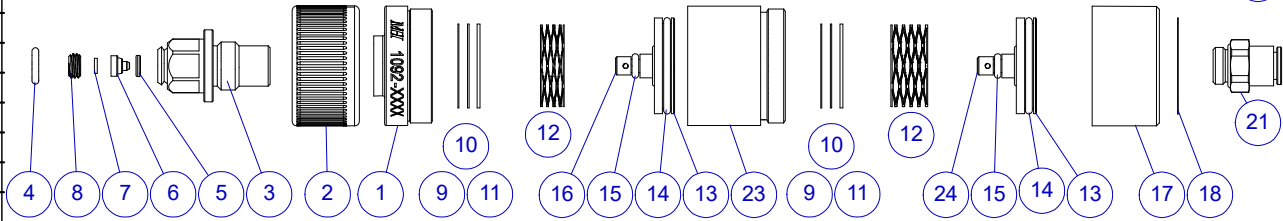


REF	1092	1092	Description
1	1	1	Inlet Body
2	1	1	Grip-Nut, CGA-540
3	1	1	Inlet/Guide
4	2	2	O-Ring (CGA-540N)
5	1	1	O-Ring
6	1	1	Inlet Seat
7	1	1	Filter Disc
8	1	1	Setscrew
9	A/R	A/R	Shim, .010
10	A/R	A/R	Shim, .016
11	A/R	A/R	Shim, .030
12	1	1	Spring
13	2	2	Piston
14	2	2	O-Ring
15	2	2	O-Ring
16	1	1	Puck (HP)
17	1	1	Outlet Body, Axial
18	1	1	Label
19	1		Outlet Fitting, 4mm tube, Straight
20	1		Outlet Fitting, 4mm tube, 90° Elbow
21		1	Outlet Fitting, 6mm tube, Straight
22		1	Outlet Fitting, 6mm tube, 90° Elbow
23	1	1	Center Body, 2-Stage Reg
24	1	1	Puck (LP)



GENERAL SPECIFICATIONS

Materials: UNS C36000 (CDA-360) Brass
 UNS A96061 (6061-T6) Aluminum

Inlet Pressure Rating: 3000 PSI MAX
 Regulated Outlet: 16 ± 2 PSI (Dynamic) (NOM 1 Bar)
 20 ± 2 PSI (Static)

Average Flow Rate: 40 L/min (AVG)
 Temperature Range: -50°F to +130°F [-45°C to +55°C]

Inlet Fitting: CGA-540N
 Spare O-ring: MH p/n 09001-0010-75 (CGA-540, Item #5)

1092-04:	Outlet Fitting	Weight
	G-1/8 BSPP x 4mm Tube	3.9 oz [112 g]
1092-06:	G-1/8 BSPP x 6mm Tube	3.9 oz [112 g]

REV	ECO	Release	Drawn	REVISION HISTORY
-3	2019-008	2019-02-14	SGO	Customer Drawing
-4	2024-026	6/13/2024	KQM	Part Updates

MH MOUNTAIN HIGH E&S CO.
REDMOND, OR. USA

THIS DOCUMENT AND ALL TECHNICAL DATA HEREON DISCLOSED ARE PROPERTY OF MOUNTAIN HIGH E&S CO. AND SHALL NOT BE USED, RELEASED OR DISCLOSED IN WHOLE OR PART WITHOUT WRITTEN PERMISSION FROM MOUNTAIN HIGH E&S CO. THIS DOCUMENT MUST BE RETURNED TO MOUNTAIN HIGH E&S CO. IMMEDIATELY UPON REQUEST.

Regulator, 2-Stage Axial, No Gauge, CGA-540N x Tube Outlet [SCD]

DWG TITLE	5SREG-1092-0x			DWG REV. -4
DWG NUMBER	CAD FILE	INV. PART NUMBER	MODEL #:	
	00REG-1092-1096-xx-\$-4	00REG-1092-04 00REG-1092-06	00REG-320-004 00REG-320-006	
DWG FORMAT: ESR-002 Rev H [20]	DWG SCALE	DWG SHEET	1 OF 1	DWG SIZE A 11x8½

THIRD ANGLE PROJECTION

UNLESS OTHERWISE SPECIFIED, DIMENSIONS ARE IN INCHES. TOLERANCES ARE:
 0.X ±0.015 ANGLES ±3°
 0.XX ±0.010 FRACTIONS ±1/64
 0.XXX ±0.005

INTERPRET GD&T PER ASME 14.5 63

DO NOT SCALE DRAWING

A

B

C

D

A

B

C

D