

p/n: 00GSE-1039-08

Transfill Adapter, JIC4 x AN800 Nipple, 8 in

Date:

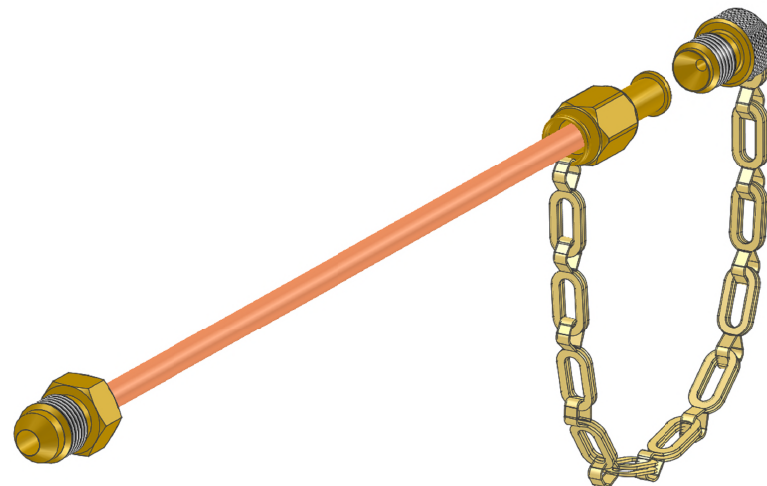
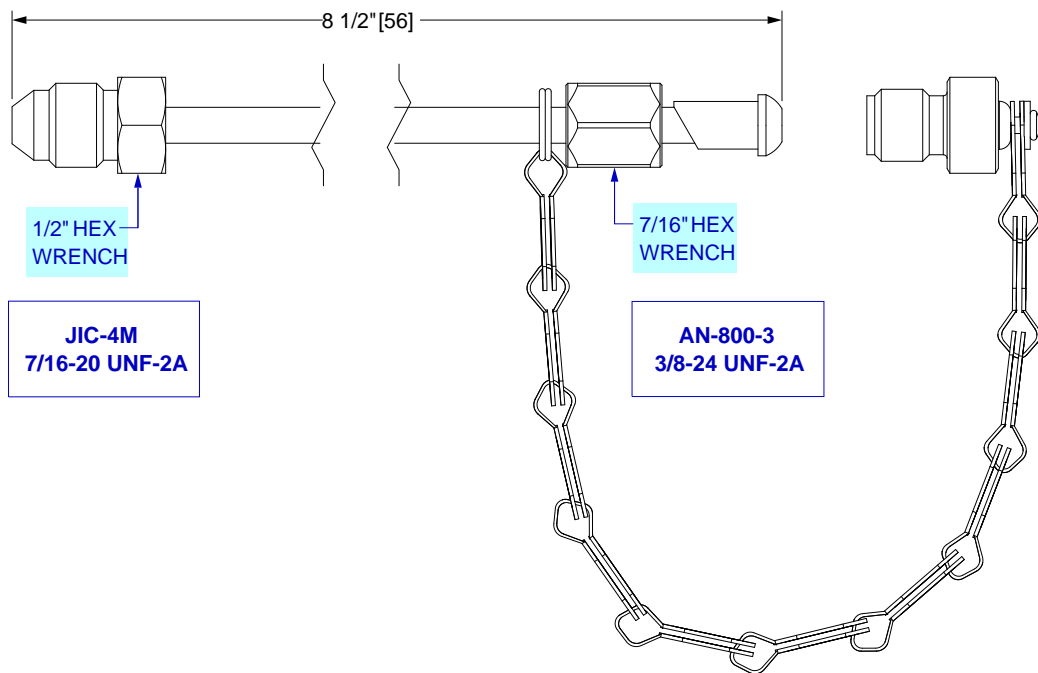
Cleaned for Oxygen Service per MH ESR-008

MH

Aviation Oxygen Systems

**MOUNTAIN HIGH
Equipment & Supply Company**

REV	ECO	Release	Drawn	REVISION HISTORY
-0	2022-035	2022-11-30	SGO	Customer Drawing



GENERAL SPECIFICATIONS

Material: UNS C36000 (CDA-360) Brass
UNS C12200 (ASTM-B75) Copper Tubing

Assembly: Silver-Brazed, #56 Alloy

Weight: 2.3 oz [65 g]

Pressure Rating: 3000 PSI MAX Working Pressure
Temp Range: -50°F to +130°F [-45°C to +55°C]

Cleaned for Oxygen Service per MH ESR-008

UNLESS OTHERWISE SPECIFIED, DIMENSIONS ARE IN INCHES. DIMENSIONS IN [] ARE MILLIMETERS (REF)

TOLERANCES ARE:
0.X ±0.015 ANGLES ±3°
0.XX ±0.010 FRACTIONS ±1/64
0.XXX ±0.005

INTERPRET GD&T PER ASME 14.5

THIRD ANGLE PROJECTION

DO NOT SCALE DRAWING

**MH MOUNTAIN HIGH E&S CO.
REDMOND, OR. USA**

THIS DOCUMENT AND ALL TECHNICAL DATA HEREON DISCLOSED ARE PROPERTY OF MOUNTAIN HIGH E&S CO. AND SHALL NOT BE USED, RELEASED OR DISCLOSED IN WHOLE OR PART WITHOUT WRITTEN PERMISSION FROM MOUNTAIN HIGH E&S CO. THIS DOCUMENT MUST BE RETURNED TO MOUNTAIN HIGH E&S CO. IMMEDIATELY UPON REQUEST.

Customer Drawing, Transfill Adapter, JIC4 x AN800 Nipple, 8 in [SCD]

5SGSE-1039-08

DWG TITLE: Customer Drawing, Transfill Adapter, JIC4 x AN800 Nipple, 8 in [SCD]
DWG NUMBER: 5SGSE-1039-08
DWG REV: -0

SRC FILE: 00GSE-1039-08\$-0
INV. PART NUMBER: 00GSE-1039-08
PROD. NAME: TA-JIC4-AN800

DWG FORMAT: ESR-002 Rev H [26]
DWG SCALE: 1 OF 1
DWG SHEET: 1 OF 1
DWG SIZE: A 11x8 1/2

Insert #: 5IGSE-1039-08