

1

2

3

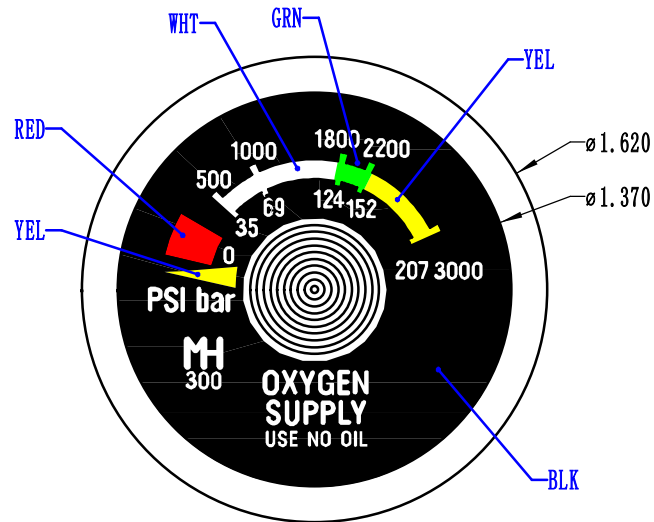
4

A

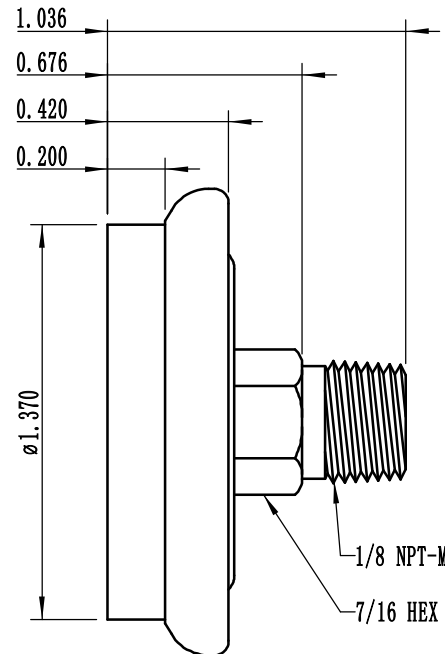
B

C

D



FRONT VIEW



SIDE VIEW

## REVISION HISTORY

REV	ECO NO. YYYY-MM-DD	NAME	NOTES
A	2004-07-00	PLM	CHANGED TO NEW FORMAT
B	2009-20-00	PLM	CHANGED TO SHOW PROPER DETAIL ON GAUGE
C	2011-28-00	PLM	ADDED COLOR DETAIL ON GAUGE DIAL (WAS DWG. NO. E900130)
C1	2019-05-21	SGO	CHANGE SWG #: WAS 9500-003, IS 5SCPG-1010-00
D	2024-043 2024-08-01	KQM	DRAWING WE-WORK & REVISIONS

## INSTALLATION NOTES:

1. Inspect gauge to ensure that male threads are free of nicks, burrs, dirt, ect. before wrapping with tape.
2. Wrap threads with oxygen compatible tape 1-1/2 to 2 turns in a clockwise direction when viewed from end. Start at the 2nd thread from the end to avoid any tape debris contamination in the system.
3. Screw the gauge into adapter fitting, ensuring threads are properly aligned. Torque to finger tight.
4. Torque to final value with wrench, 2-3 turns from finger tight (TFFT)
5. SEE MH-300 Installation Drawing insert (MH Document #: 5ICPG-0030-00) for detailed panel installation instructions.

## SPECIFICATIONS:

**MATERIAL:** BRASS, STAINLESS STEEL, & ACRYLIC  
**MAX. PRESSURE:** 207 BAR (3000 PSIG)  
**OPERATING RANGE:** 152 BAR (0-2200 PSIG)  
**REAR AXIAL PORT:** 1/8 NPT-M  
**TEMP RANGE:** -25° F TO 225° F  
**OEM VEN CODE:** 1057  
**TORQUE:** 2-3 TFFT  
**RECOMMENDED TAPE:** PTFE OXYGEN COMPATIBLE  
 ("A-A-58092" or MH p/n: 00VEN-0112-01)



UNLESS OTHERWISE SPECIFIED,  
 DIMENSIONS ARE IN INCHES.  
 DIMENSIONS IN [ ] ARE MILLIMETERS (REF)  
 TOLERANCES ARE:  
 0.X ±0.015 ANGLES ±3°  
 0.XX ±0.010 FRACTIONS ±1/64  
 0.XXX ±0.005  
 INTERPRET GD&T PER ASME 14.5

THIRD ANGLE PROJECTION		DRAWN		DOC TITLE	
		KQM 2024-08-01		MH-300 Pressure Gauge (SCD)	
		EAM 2024-08-07		5SCPG-1010-00	
		JB 2024-08-07		DWG REV. D	
		HBS 2024-08-13		SRCFILE 5SCPG-1010-00\$D INV. PART 00CPG-1010-00 MODEL:	
DO NOT SCALE DRAWING		DWG FORMAT: ESR-002 Rev H [27]		DWG SCALE 1.5:1	
		DWG SHEET 1 OF 1		DWG SIZE A 11x8 1/2	

**MH MOUNTAIN HIGH E&S CO.**  
**REDMOND, OR. USA**

THIS DOCUMENT AND ALL TECHNICAL DATA HEREON DISCLOSED ARE PROPERTY OF MOUNTAIN HIGH E&S CO. AND SHALL NOT BE USED, RELEASED OR DISCLOSED IN WHOLE OR PART WITHOUT WRITTEN PERMISSION FROM MOUNTAIN HIGH E&S CO. THIS DOCUMENT MUST BE RETURNED TO MOUNTAIN HIGH E&S CO. IMMEDIATELY UPON REQUEST.

1

2

3

4

D